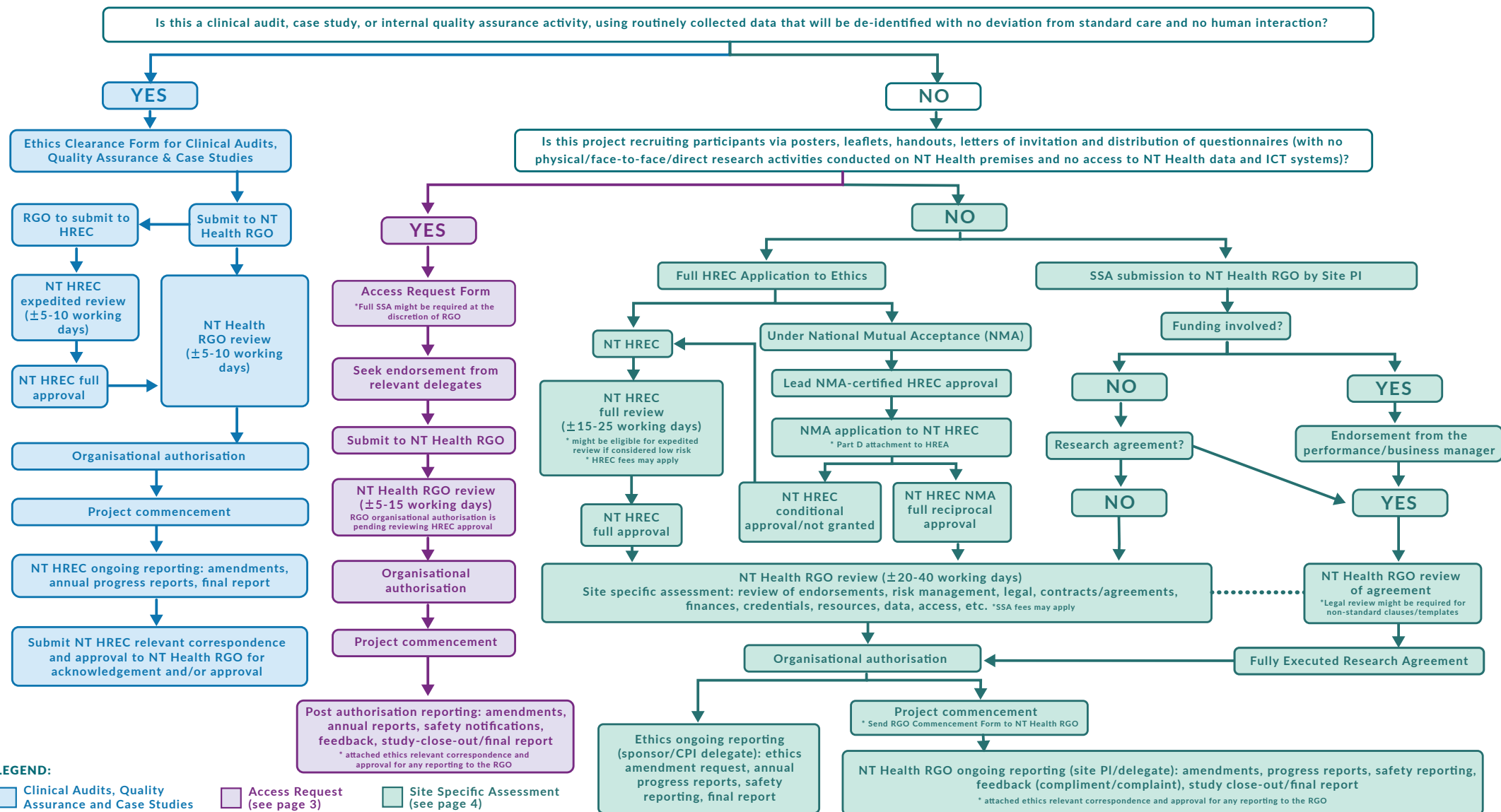


Conducting a research project in NT Health

This workflow should be used as a general reference when applying for NT Health research governance organisational authorisation for research projects



LEGEND:

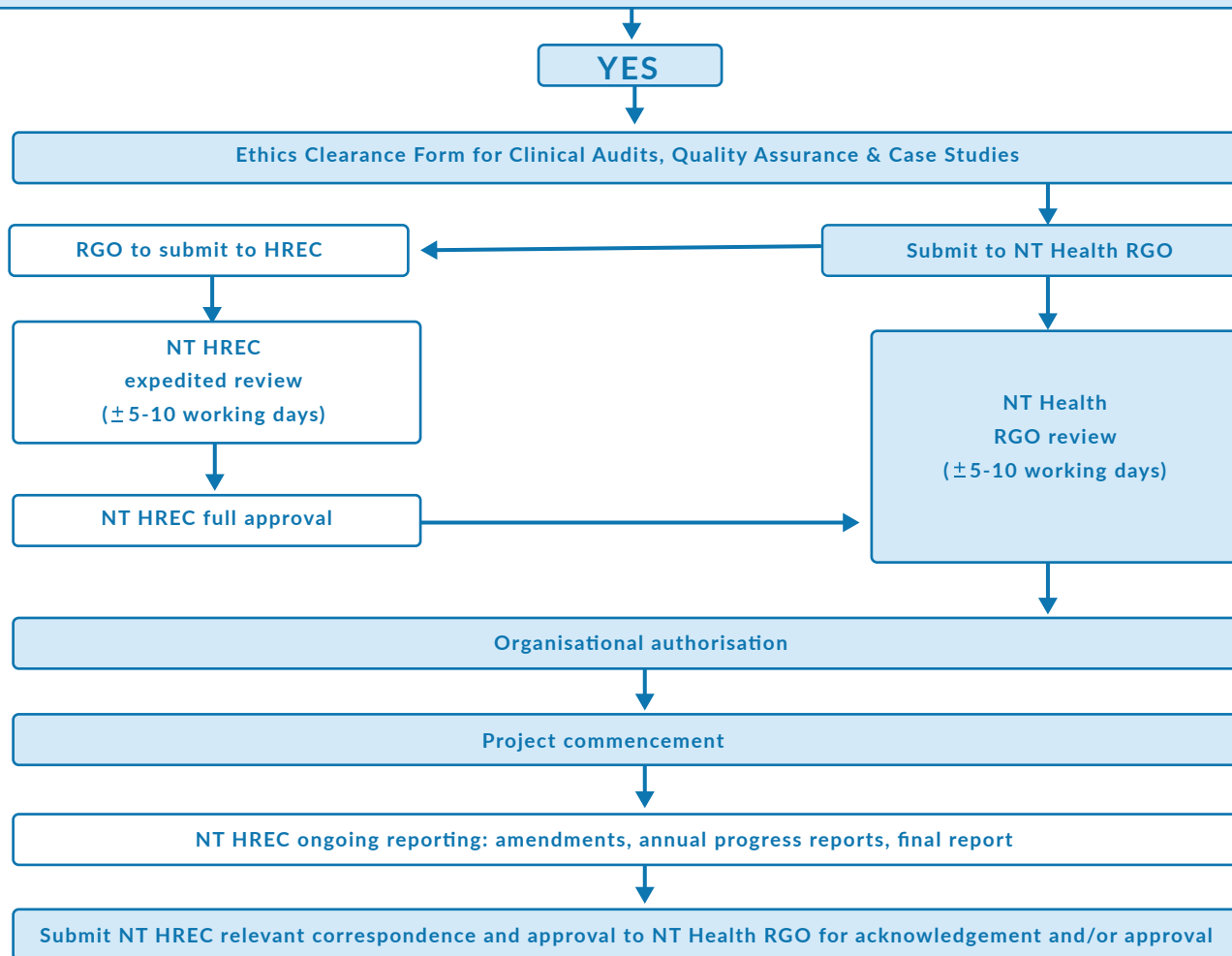
- Clinical Audits, Quality Assurance and Case Studies (see page 2)
- Access Request (see page 3)
- Site Specific Assessment (see page 4)

Conducting a research project in NT Health

This workflow should be used as a general reference when applying for NT Health research governance organisational authorisation for research projects



LEGEND: Clinical Audits, Quality Assurance and Case Studies Human Research Ethics Committee (HREC) Review Access Request Site Specific Assessment

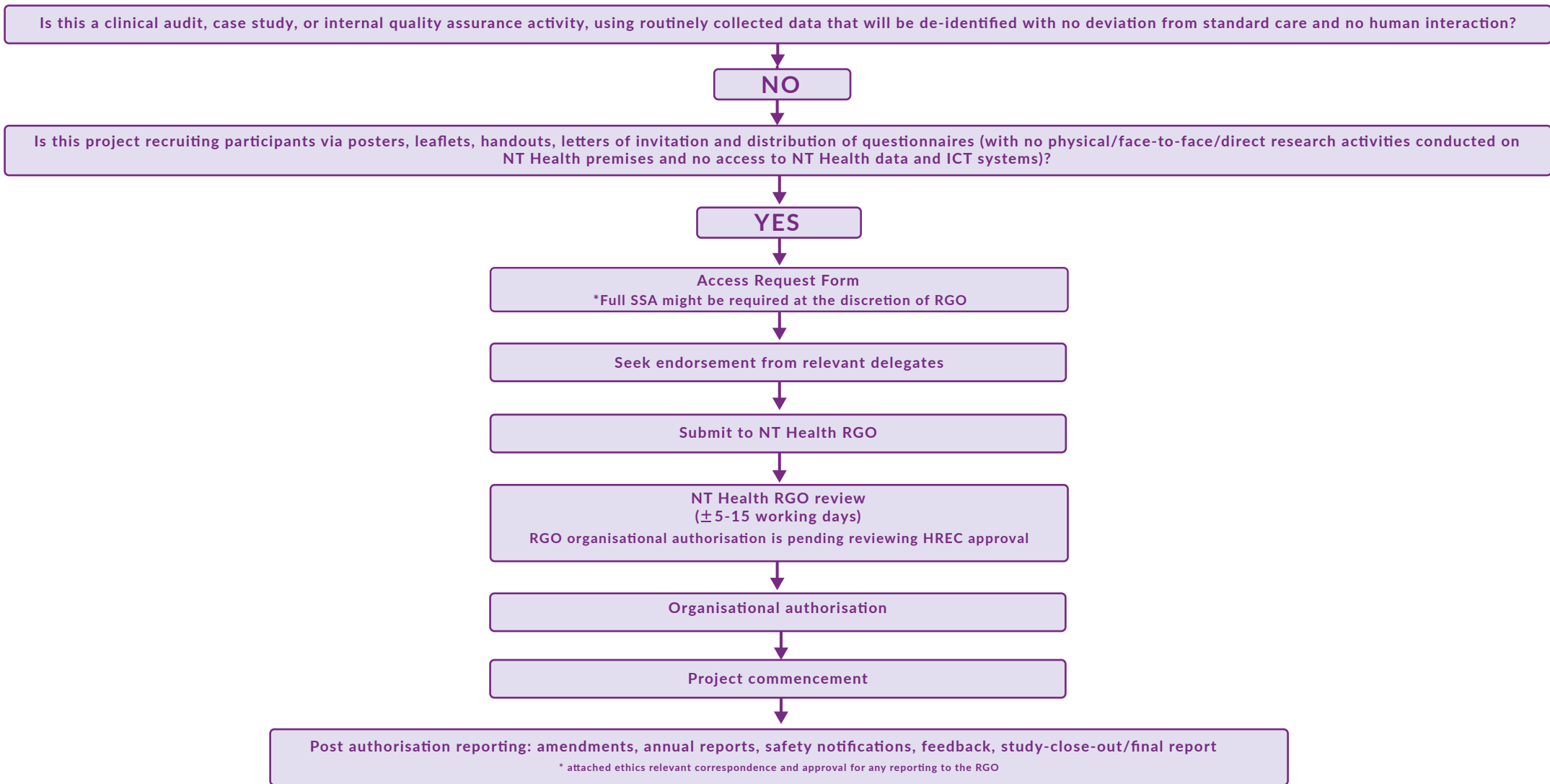
Is this a clinical audit, case study, or internal quality assurance activity, using routinely collected data that will be de-identified with no deviation from standard care and no human interaction?



Conducting a research project in NT Health

This workflow should be used as a general reference when applying for NT Health research governance organisational authorisation for research projects

LEGEND:  Clinical Audits, Quality Assurance and Case Studies  Human Research Ethics Committee (HREC) Review  Access Request  Site Specific Assessment



Conducting a research project in NT Health

This workflow should be used as a general reference when applying for NT Health research governance organisational authorisation for research projects

LEGEND: Clinical Audits, Quality Assurance and Case Studies Human Research Ethics Committee (HREC) Review Access Request Site Specific Assessment

